

That CAD Girl

jennifer dibona

website: www.thatcadgirl.com

email: thatcadgirl@aol.com

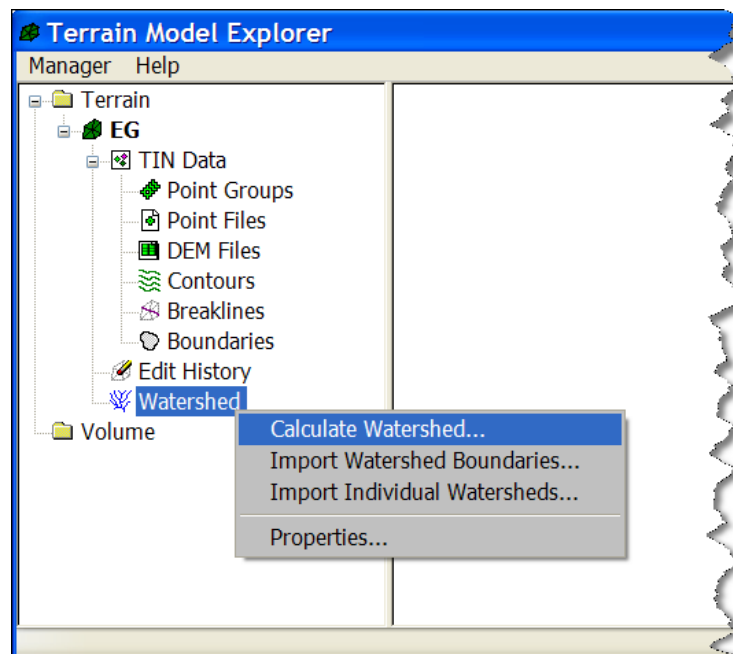
phone: (919) 417-8351

fax: (919) 573-0351

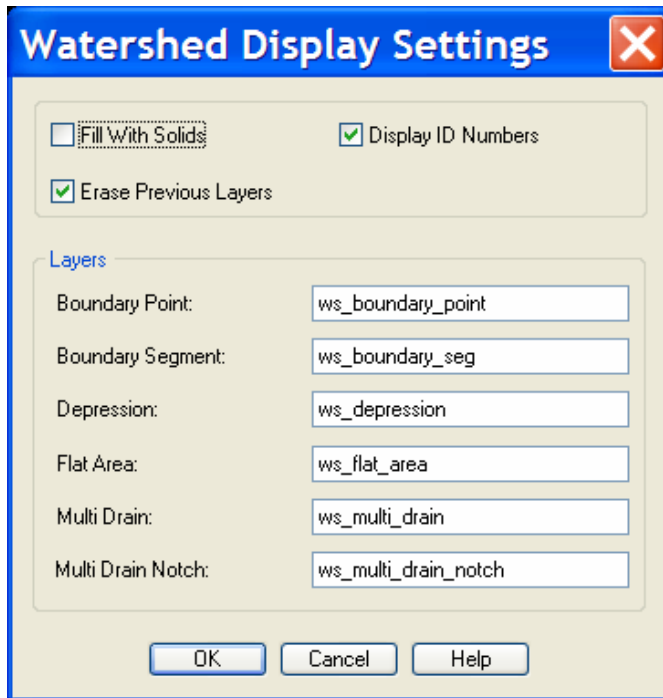
Calculate and Import Watersheds

Initial Setup

- You must be attached to the correct Land Desktop project database.
 - You must have already built a Land Desktop surface
 - You must set the current surface: Terrain → Set Current Surface
1. Go to Terrain → Terrain Model Explorer
 2. If necessary, double-click on the surface name to expand the tree so that the "Watershed" item is visible.
 3. Right click on "Watershed" and select "Calculate Watershed". Accept the default settings and pick "OK".



- Right click on Watershed again and select "Import Watershed Boundaries". Make sure to uncheck the box next to "Fill With Solids".



- The watershed boundaries and labels are imported on the layers defined in the Watershed Display Settings dialog box.