

That CAD Girl

jennifer dibona

website: www.thatcadgirl.com

email: jennifer@thatcadgirl.com

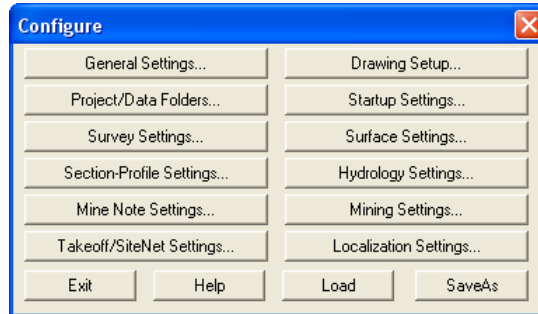
phone: (919) 417-8351

fax: (919) 573-0351

Carlson Configure

Settings → Carlson Configure

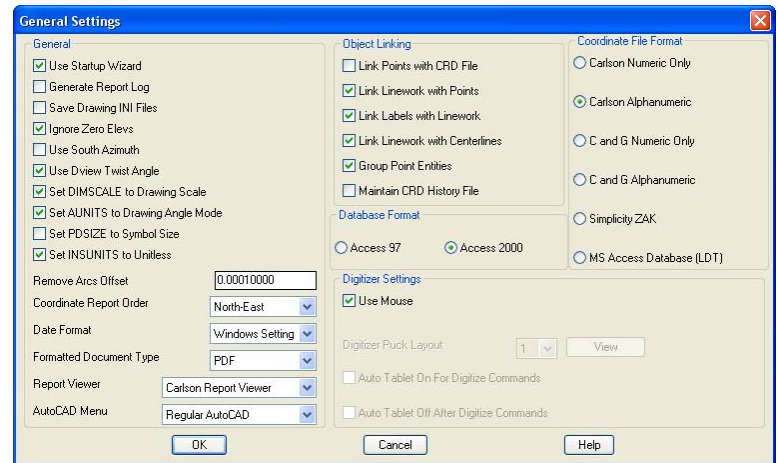
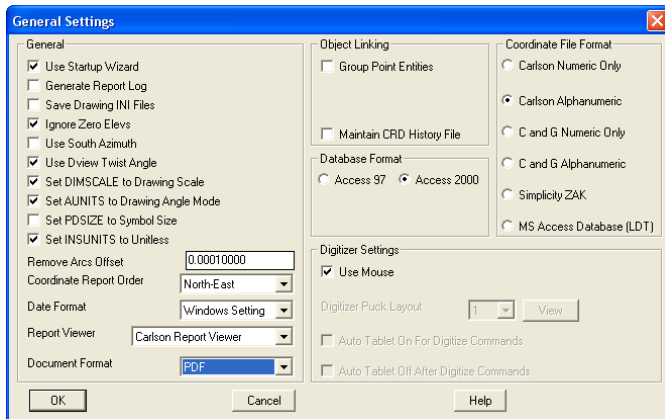
After making changes through the Carlson Configure dialog box, use the **SaveAs** button to export all settings to a Configuration file (.cfg file) that can be loaded into other Carlson installations by using the **Load** button.



General Settings:

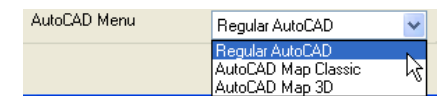
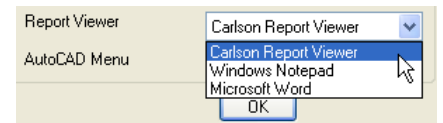
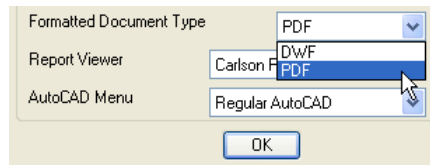
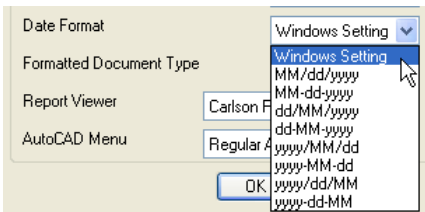
(IntelliCAD)

(AutoCAD)



There are a few differences between the General Settings available in the IntelliCAD and AutoCAD versions.

- **AutoCAD Menu:** If you are running Carlson Software on top of Map, Land Desktop or Civil 3D, you have the ability to change the pull-down menus available when loading the "AutoCAD Menu" in Carlson Software. The AutoCAD menu options available here are roughly equivalent to the "Workspaces" available in those programs.
- **Object Linking:** AutoCAD-based programs provide for more linking between entities and associated data files.



Drawing Setup:

The Drawing Setup dialog box is divided into several sections:

- Scale and Size Settings:** Includes radio buttons for English 1in=?ft (selected) and Metric 1m=?m. Text boxes for Horizontal Scale (50.0), Vertical Scale (5.0), Symbol Size (0.080), Text Size (0.080), Line Type Scaler (1.000), and Symbol Name (SPT4). A Select Symbol button is below.
- Vertical Angle Mode:** Radio buttons for None (selected), 0 Degrees Level, 90 Degrees Level, and Elevation Difference.
- Coordinate System:** System (Grid, Local selected), Projection (None), English Units (US Feet), Zone, Lat/Lon Datum (WGS84).
- Point Prompt-Label Settings:** Checkboxes for Descriptions, Elevations, Locate on Real Z Axis, Instrument and Rod Height, Prompt For Symbol Names, and Label Zero Elevations. Attribute Layout ID: 1.
- Angle Format:** Radio buttons for Bearing (selected), Azimuth, Gons, and Other.
- Point Number Settings:** Checkboxes for Point Numbers and Automatic Point Numbering.
- Drawing Setup Source on Startup:** Radio buttons for Use Drawing Template and Use Configuration (selected).

Buttons: OK, Cancel.

Making changes to Drawing Setup through Carlson Configure will apply to the active and future drawings started in Carlson Software. To make Drawing Setup changes to the active drawing ONLY, go to Settings → Drawing Setup.

Project/Data Folders:

The Project Setup dialog box includes the following sections:

- Data/Project Folders:** Radio buttons for Project Folder, Drawing Folder (selected), and Fixed Folder. Sub-folders: Project Sub-Folders Setup, Data Type Sub-Folders.
- Startup Project/Data Folder:** Text box (C:\Carlson Projects\), Set button.
- Current Project Folder:** Text box (C:\Carlson Projects\sample_Project), Set button.
- Current Data Folder:** Text box (C:\Carlson Projects\sample_Project), Set button.
- Buttons:** Reassign Data Folders, Clear Data Folder History.
- Settings Folder:** Use Data Folder for Settings (checkbox), Startup Settings Folder (C:\Carlson Projects\Settings\), Set button; Current Settings Folder (C:\Carlson Projects\Settings\), Set button.
- Current Project:** Project File text box, Set button.
- Data Depot Settings:** Data Depot Type (None), Setup button.

Buttons: OK, Cancel, Help.

Making changes to Project Setup through Carlson Configure will apply to the active and future drawings started in Carlson Software. To make Project Setup changes to the active drawing ONLY, go to Settings → Set Project/Data Folders.